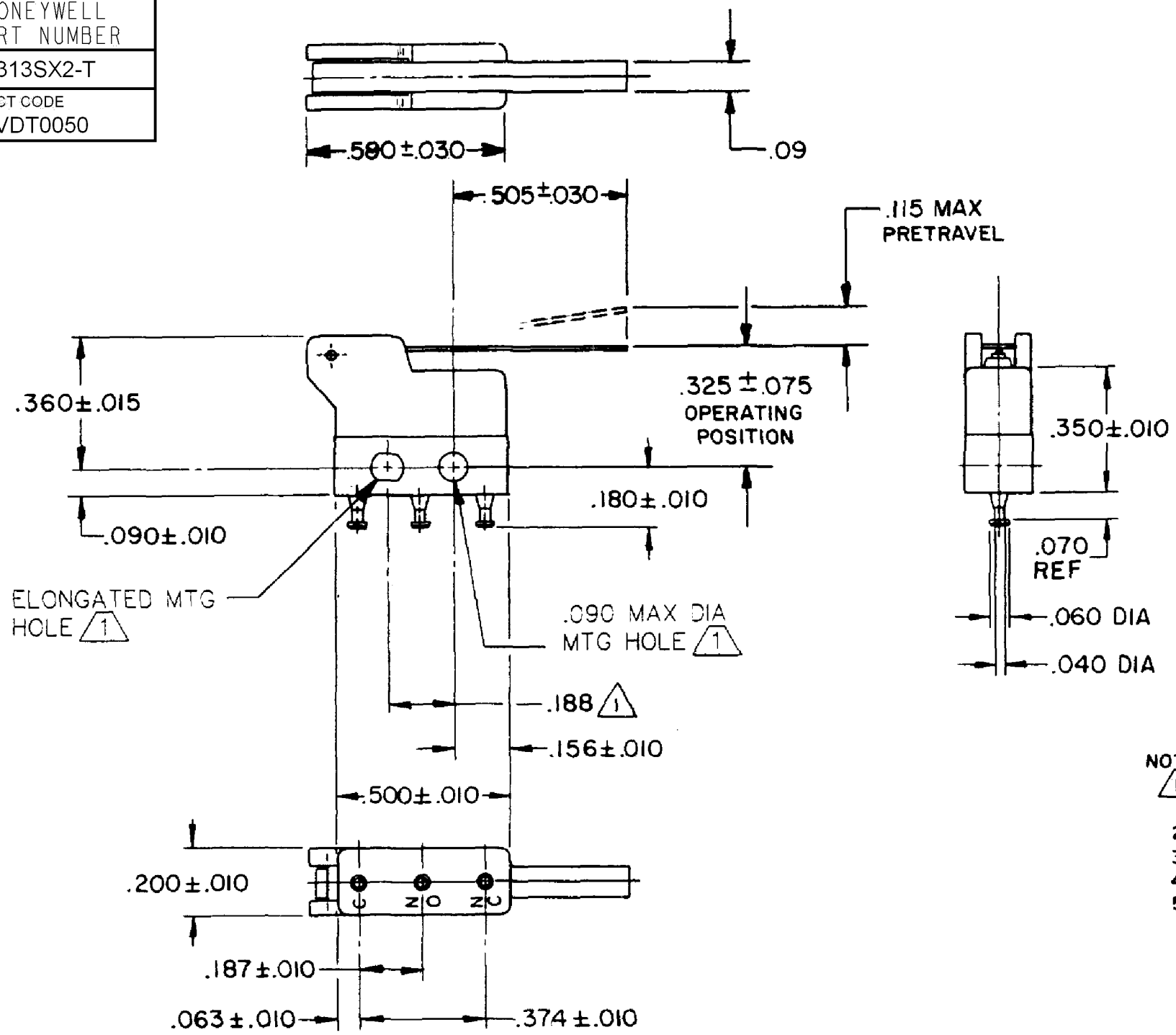


HONEYWELL
PART NUMBER
313SX2-T
PRODUCT CODE
VDT0050

REV	DOCUMENT	CHANGED BY	CHECK
12	0038558	SS 08MAY08	BLR



- NOTE -
- 1 MOUNTING HOLES WILL ACCEPT PINS OR SCREWS OF .087 MAX DIA ON .188 ± .002 CENTERS
 - 2 - TERMINALS ARE SOLDER DIPPED WITH RoHS-COMPLIANT TIN/COPPER/SILVER SOLDER.
 - 3 - SWITCH WILL WITHSTAND TEMPERATURE OF 250° F
 - 4 - MOVABLE CONTACT MATERIAL - 24 SOLID GOLD OVERLAY
 - 5 - STATIONARY CONTACT MATERIAL - GOLD ALLOY

RELEASE NO.	PR-3162
REPLACES	

CHARACTERISTICS	
OPERATING FORCE	30 GRAMS MAX
RELEASE FORCE	5 GRAMS MIN
DIFFERENTIAL TRAVEL	.035 MAX
OVERTRAVEL	.025 MIN

ELECTRICAL DATA		
CONTACT ARRANGEMENT SPDT		
30 VOLTS DC RATING		
	SEA LEVEL	50,000 FT
INDUCTIVE	0.5 AMP	0.5 AMP
RESISTIVE	1 AMP	1 AMP
MAXIMUM INRUSH 2 AMP		
APPROVALS	KEMA, CE	1A 250 V - T125 25E3
	UL, CSA	1A 125 VAC BRAND L22J

DESIGN UNITS: INCH
TOLERANCES UNLESS NOTED:
NO PLACE X ±
ONE PLACE .X ±
TWO PLACE .XX ±
THREE PLACE .XXX ±
FOUR PLACE .XXXX ±
ANGLES ±
THIRD ANGLE PROJECTION

DRAWN	SPK	27FEB08
CHECK	RJ	27FEB08
THIS DRAWING COVERS A PROPRIETARY ITEM AND IS THE PROPERTY OF HONEYWELL. THIS DRAWING IS NOT TO BE COPIED OR USED WITHOUT THE PERMISSION OF HONEYWELL.		
INTERPRET PER ANSI Y14.5M-1982 OTHER HONEYWELL ENGINEERING STANDARDS MAY APPLY		
RASTER		

Honeywell			
TITLE SWITCH - BASIC			
SIZE	TYPE	DRAWING NAME	REV
B	I	313SX2-T	12
SCALE	-	WEIGHT:	SHEET 1 OF 1